

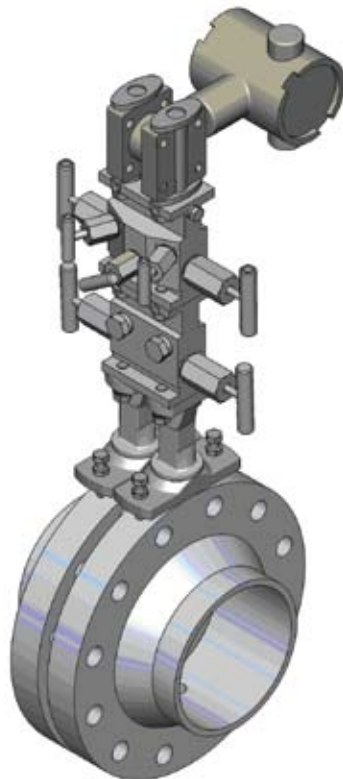


3170 Wasson Road • Cincinnati, OH 45209 USA
Phone 513-533-5600 • Fax 513-871-0105
hex@richardsind.com • www.hexvalve.com

Stabilized Connectors

Installation & Maintenance Instructions for Stabilized Connectors

Warning: Hex Valve products must only be used, installed and repaired in accordance with these Installation & Maintenance Instructions. Observe all applicable public and company codes and regulations. In the event of leakage or other malfunction, call a qualified service person; continued operation may cause system failure or a general hazard. Prior to servicing equipment, disconnect, shut off, drain and/or bypass all pressurized fluids.



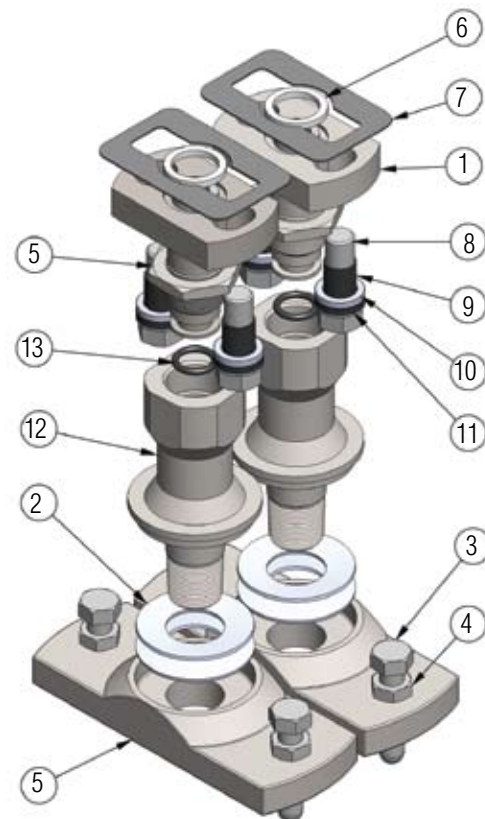
Ideal Installation

Stabilized Connectors

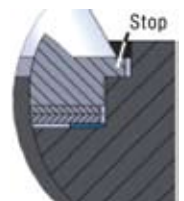
Connectors are shipped loosely assembled as shown in illustration above. Tools needed for assembly include 9/16" open end wrench for base jack screws (4) and nuts (5) and 5/8" open end wrench for manifold mounting kit bolts (9). A 1-3/8" open end wrench can be used to install the connectors. A 1-1/4" wrench for the locknuts. Connectors may be mounted vertically as shown or horizontally.

Caution: Make certain that there is no pressure in the orifice fitting before loosening any fittings or joints.

1. Wrap each 1/2" NPT connection with minimum of three wraps of Teflon tape. Mount each connector (12) to orifice fittings by sliding through the two Belleville washers (2), base bracket (5) and threading the 1/2" NPT end connection into the orifice fitting. Connectors can be tightened to seal using 1-3/8" wrench.
2. Flange ends (1) should be hand threaded into connectors (12) until each internal stop. With locknut (5) loose, back out each flange end (1) just enough to align flanges to correspond to manifold valve base. Surface of each flange should be adjusted to the same height and adjustment secured by tightening the locknut (5) with 1-1/4" wrench. If



- flange end is removed from connector (12), insure o-ring (13) is fitted in groove and has no nicks or scratches.
3. Compress the stack of two Belleville washers (2) inside the base bracket (5) by extending the four jack screws (3) with the 9/16" wrench until the stop on the connectors (1) contacts the base bracket (5). Check both connectors to insure this gap is closed; do not tighten further. Lock jack screws (3) in place with lock nuts (4).
 4. Connect manifold to connector flanges (1) using two Teflon gaskets (6) and two optional dielectric shims (6) and the four dielectric bolts (8), bushings (9) and washers (10 & 11) stacked as shown or standard bolts with lockwashers.
 5. Connect manifold valve by torquing bolts (8) to 50-55 ft-lbs using a 5/8" wrench.



Maintenance

Stabilized Connectors

No regular maintenance is necessary. Gaskets (6) should be replaced if manifold is removed.